

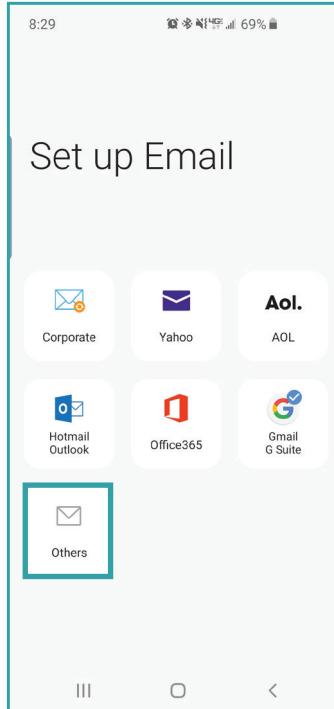


RTC NETWORKS ANDROID EMAIL SETUP GUIDE

STEP 1

From the Home screen, select **Email**

Select **Others**

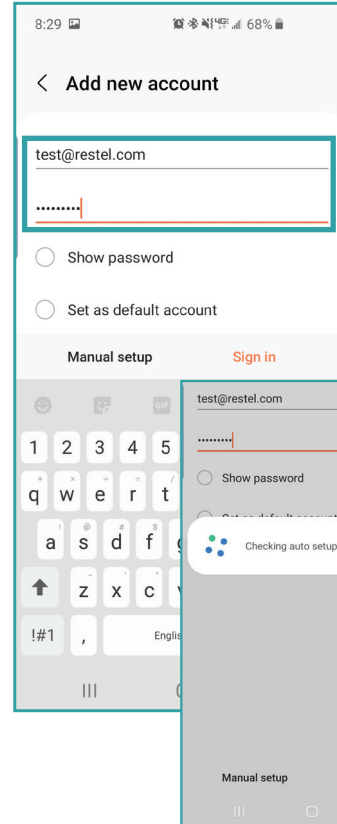


STEP 2

ADD ACCOUNT

Enter **Email & Password**

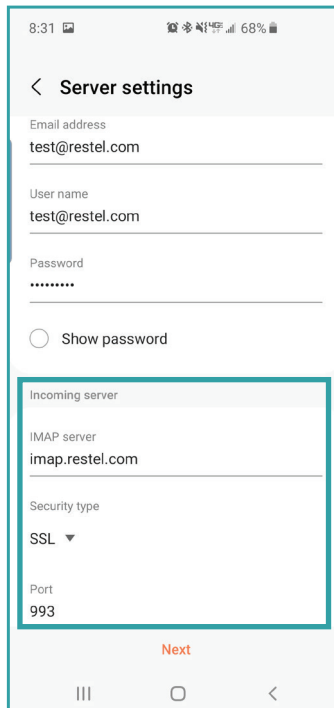
Select **Sign in**



STEP 3

SETTINGS

Verify **Incoming Server Settings**

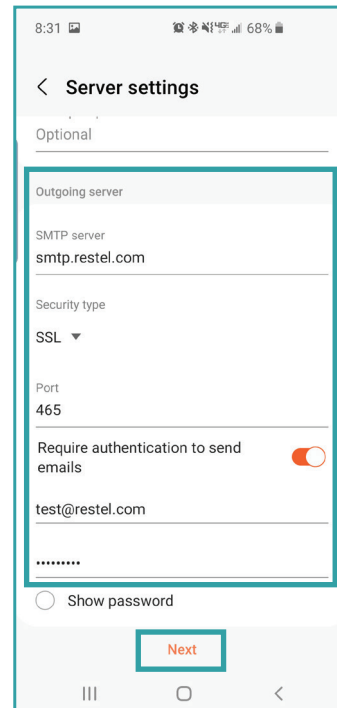


STEP 4

SETTINGS

Verify **Outgoing Server Settings**

Select **Next**



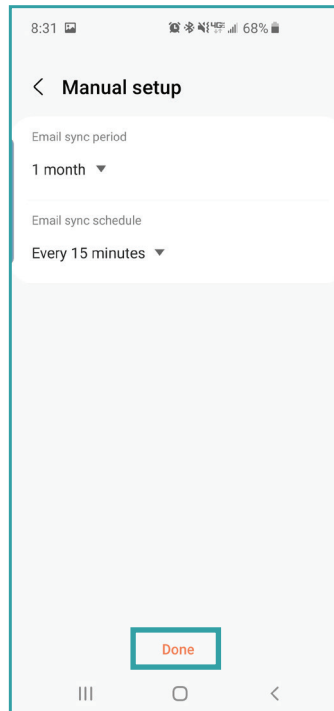


RTC NETWORKS ANDROID EMAIL SETUP GUIDE

STEP 5 SYNC SETTINGS

Setup Sync Preferences

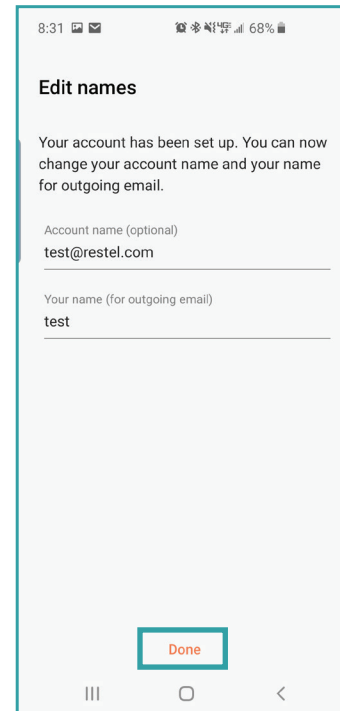
Select Done



STEP 6 EDIT NAME

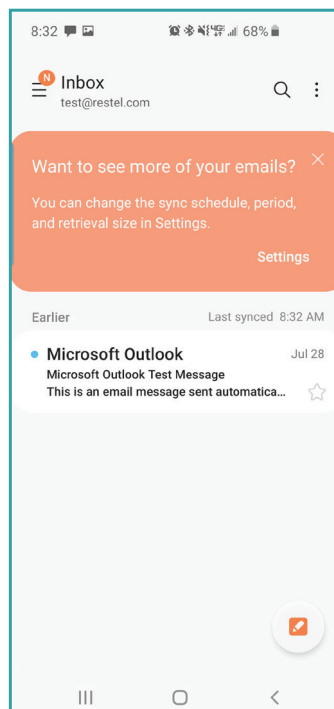
Edit Name if you would like to

Select Done



YOU ARE DONE

Your account is now setup and messages will begin to populate in your inbox.



If you are having trouble with setting up an email account on your devices after completing these instructions, contact the RTC Networks help desk at 701.862.3115.
